

The CALI

Bold Designer Townhomes

1 Bed + Den
1 Bath
618 sq ft

Key Features

GARAGE

9FT CEILING

1



The Cali townhome comes standard with its own **private patio**. Picture summer bbqs, leisurely brunches and evenings spent sipping cocktails in your own oasis.

5

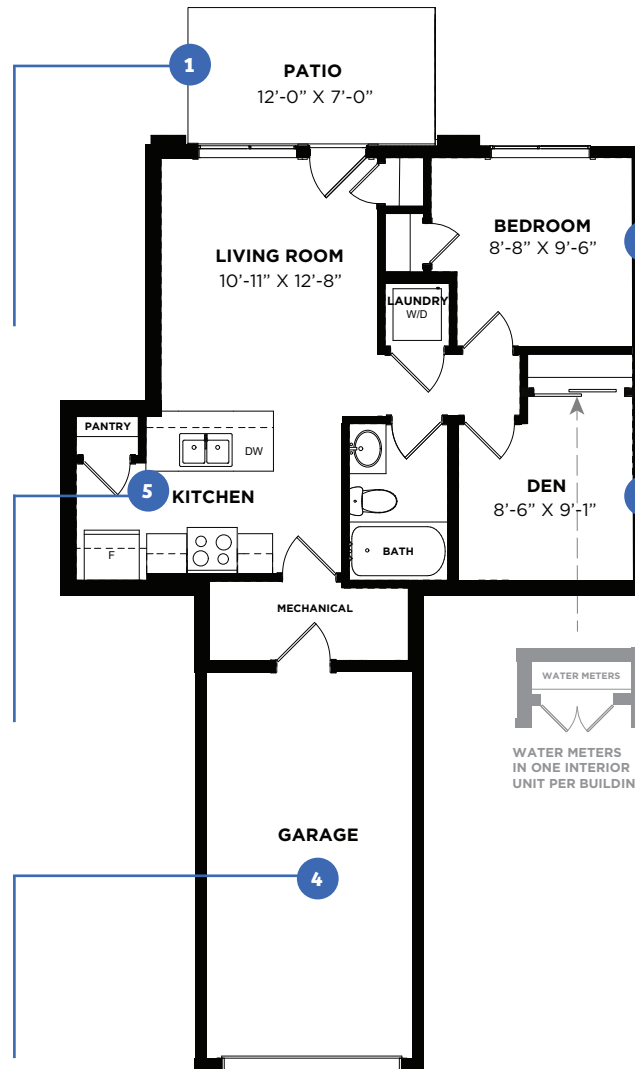


The kitchen is designed for maximum efficiency. Using the **kitchen work triangle rule**, movement between the fridge, stove and sink is minimized.

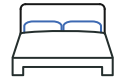
4



Your **attached garage** means no more scraping ice and snow off your car on a cold winter's morning.

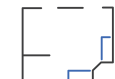


2



This **spacious primary bedroom** is designed to fit a queen-size bed and two night stands with room to spare.

3



The **multi-functional den** is your special space for a home-office, yoga, library, gaming or as a hobby room.

RohitTM

HOMES | Bold Goes Further

The CALI 2 BD

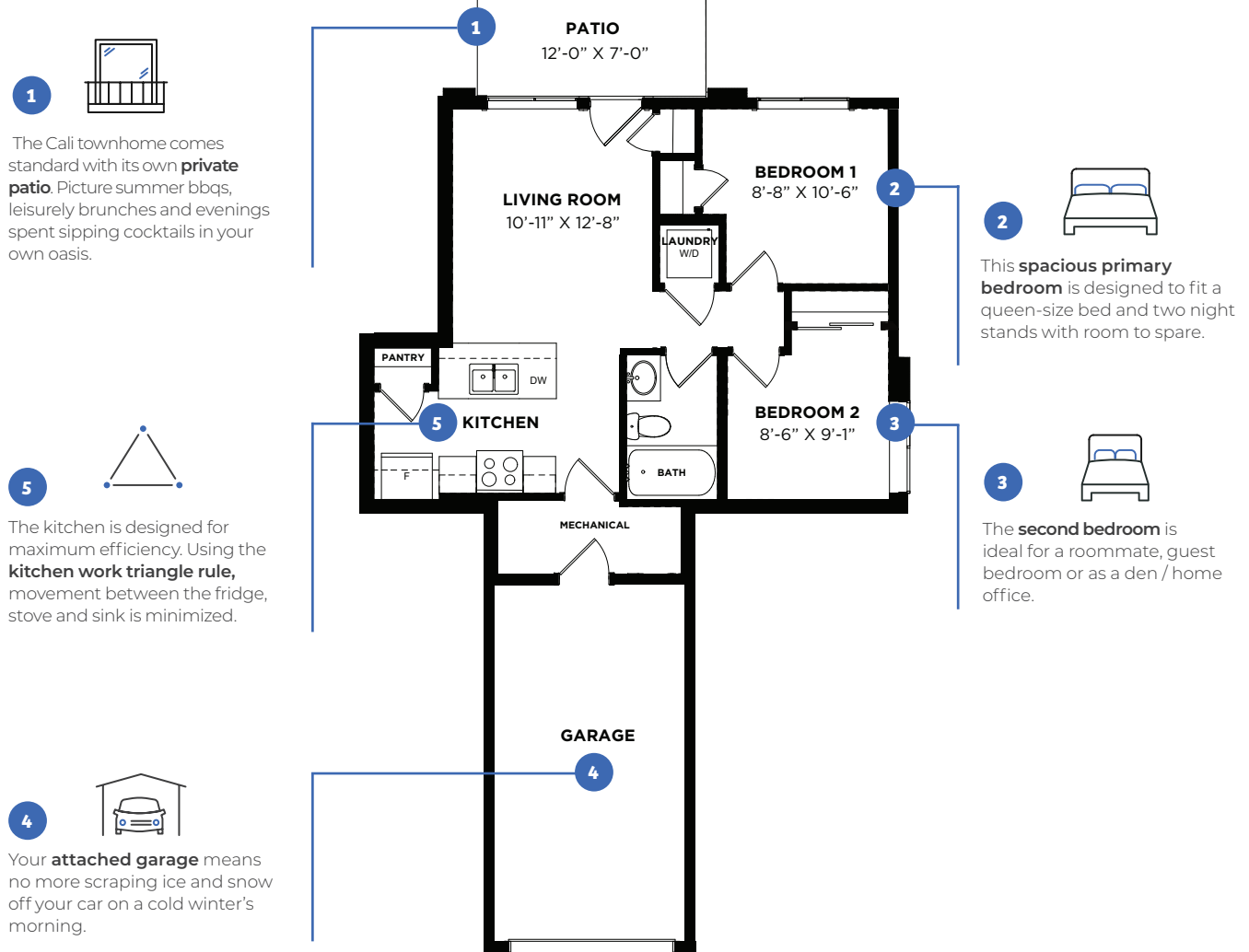
Bold Designer Townhomes

2 Bed
1 Bath
618 sq ft

Key Features

GARAGE

9FT CEILING



RohitTM
HOMES | Bold Goes Further

The artist renderings provided are conceptual and may be modified without prior notice. We cannot guarantee that the facilities or features depicted in the show home or in this marketing material will be ultimately built, or if constructed, that they will match exact in terms of type, size, or specification. Dimensions are approximations and final dimensions are likely to change; the windows and garage doors denoted in the renderings may be subject to modifications based on the specific elevation of the building. As of April 23, 2024.